

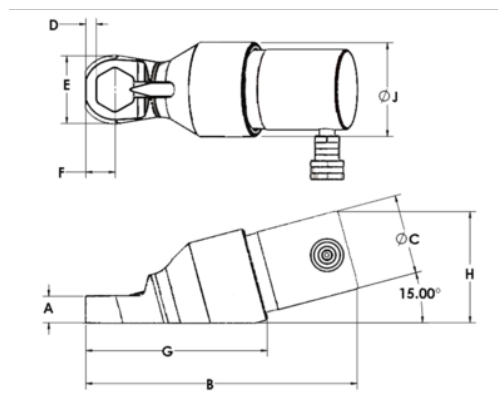


## ASAH Hydraulic Nut Splitter, Angle Head





### PRODUCT DETAILS

- Cuts through the largest frozen nuts in just seconds
- One cut frees even the most corroded nuts so it can be turned
- Cutting chisel is easily calibrated so only the nuts is cut with no damage to the bolt or stud threads
- Fast set-up; goes from toolbox to ready-to-use in less than five minutes
- Reduces danger to operator or nearby equipment
- Chisels suitable for dozens of cuts before resharpening is needed
- Angle head



PRODUCT ATTRIBUTES

Product		<b>B</b>	<b>D</b>	<b>E</b>	<b>F</b>	<b>G</b>	<b>H</b>	<b>J</b>	
<b>AS105AH</b>	5/16-7/8 in	11.43 in	0.44 in	2.87 in	1.22 in	7.6 in	4.71 in	3.97 in	20 lb
<b>AS200AH</b>	7/8-1-1/4 in	11.95 in	0.50 in	3.63 in	1.63 in	8.16 in	4.72 in	3.97 in	21 lb
<b>AS204AH</b>	1-1/4-1-1/2 in	15.84 in	0.69 in	4.00 in	1.87 in	11.8 in	6.68 in	5.87 in	61 lb
<b>AS210AH</b>	1-3/8-1-3/4 in	16.49 in	0.75 in	4.75 in	2.14 in	12.39 in	6.07 in	5.97 in	62 lb
<b>AS308AH</b>	1-3/4-2-1/4 in	19.25 in	0.88 in	6.28 in	2.63 in	13.62 in	8.32 in	7.25 in	95 lb
<b>AS314AH</b>	2-2-1/2 in	19.74 in	0.88 in	6.30 in	2.74 in	14.1 in	8.27 in	7.38 in	100 lb